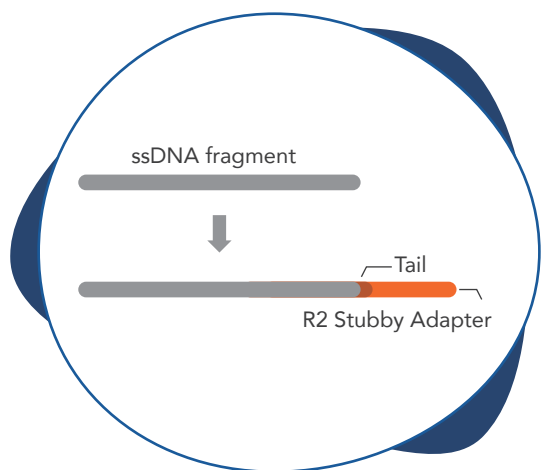


IDT Adaptase

稀有樣本建庫系列產品



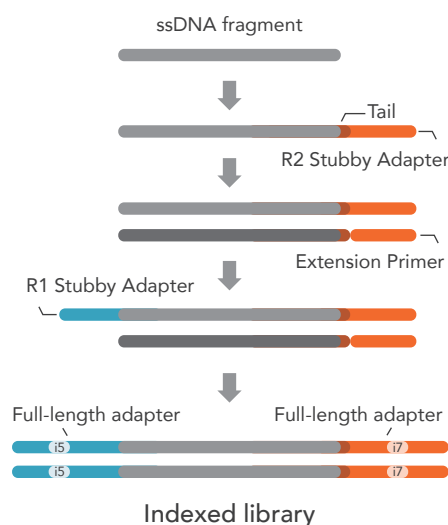
xGen™ Adaptase Technology

- 單股 DNA 連接技術 (Single-stranded DNA ligation technology)
- 無論長度或序列，皆可高效轉換為 NGS library
- 減少建庫所需的 DNA 量，同時降低誤差

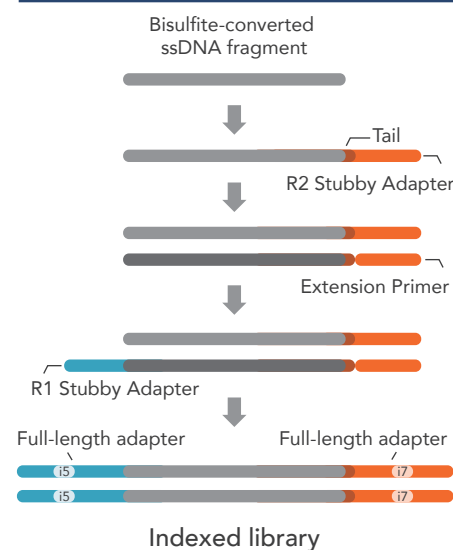
DNA library Prep

- From degraded and damaged ssDNA and dsDNA samples
- To sequence difficult-to-process samples
- Gold-standard for DNA methyl-seq

xGen ssDNA & Low-Input



xGen Methyl-Seq



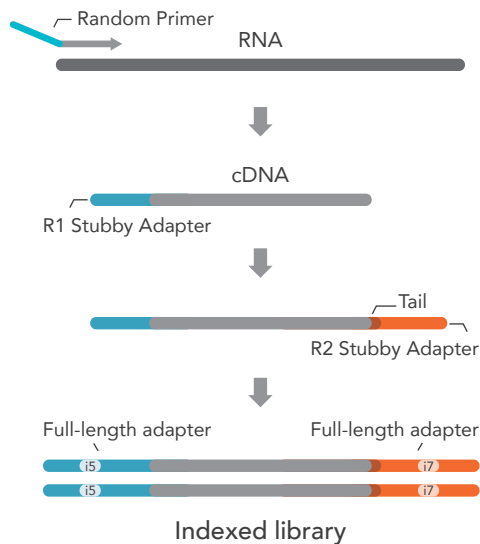
Feature	xGen ssDNA & Low input	xGen Methyl-Seq
Sample types	Low-quality degraded DNA, ssDNA, mixtures of ssDNA and dsDNA	gDNA, FFPE, cfDNA
Input DNA amount	10 pg to 250 ng	100 pg to 100 ng
Indexing compatibility	CDI primers up to 96-plex; UDI primers up to 1536-plex	
System compatibility and multiplexing format	Illumina® sequencing instruments	



RNA library Prep

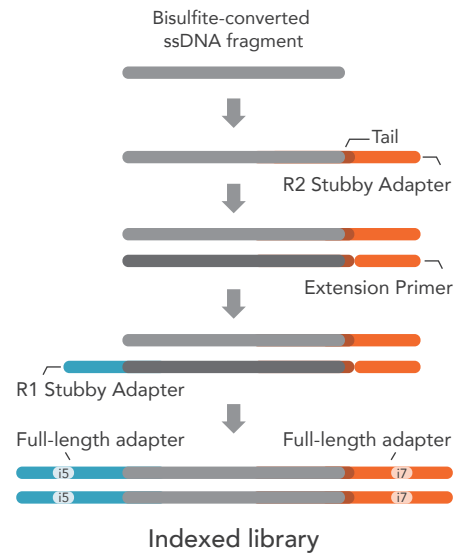
xGen RNA

- Fastest workflow
- Most cost-effective
- Best when ample rna is available



xGen Broad-Range RNA

- Broader input range
- Fewest adapter dimers
- Consistent and reliable for diverse samples



Feature	xGen RNA	xGen Broad-Range RNA
Sample types	100 ng to 1 µg total RNA 5 ng to 100 ng mRNA	10 ng to 1 µg total RNA 100 pg to 100 ng mRNA
RNA types supported	Poly(A)-enriched mRNA Ribo-depleted RNA Total RNA	Poly(A)-enriched mRNA Ribo-depleted RNA Total RNA
Indexing options	Combinatorial dual / Unique dual / Normalase compatible	
Multiplexing capability	Up to 1536 libraries	

“

Challenging but cherish samples, as free as butterflies, were trapped in the diving bell of library prep, until IDT Adaptase unleashed their potential.

— A kind of *The Diving Bell and the Butterfly*.

我如蝴蝶般珍貴且稀有的樣本，卻困在如潛水鐘般的傳統建庫裡，直到IDT Adaptase才讓他們破繭而出。

— 也是種潛水鐘與蝴蝶

For Research Use Only.
Not for use in diagnostic procedures.



IDT
INTEGRATED DNA TECHNOLOGIES

